



**TRANSPORTATION CABINET**

Frankfort, Kentucky 40622  
www.transportation.ky.gov/

**Steven L. Beshear**  
Governor

**Michael W. Hancock, P.E.**  
Secretary

October 17, 2012

CALL NO. 312  
CONTRACT ID NO. 121361  
ADDENDUM # 1

Subject: Bath County, FD04 006 0064 117-124  
Letting October 19, 2012

- (1) Revised - General Summary - Page 24 of 169
- (2) Added - Crash Cushion - Page 43(a) of 169
- (3) Revised - Maintenance of Traffic - Pages 62-63 of 169
- (4) Revised - Bid Items - Pages 167-169 of 169

Proposal revisions are available at <http://transportation.ky.gov/Construction-Procurement/>.

If you have any questions, please contact us at 502-564-3500.

Sincerely,

A handwritten signature in blue ink that reads "Ryan Griffith".

Ryan Griffith  
Director  
Division of Construction Procurement

RG:ks  
Enclosures



An Equal Opportunity Employer M/F/D

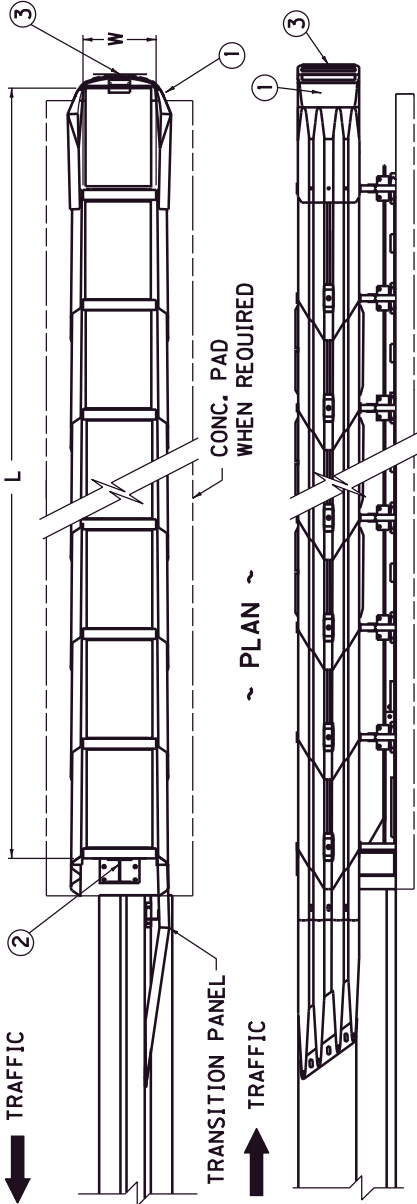
I-64

**BATH COUNTY  
 PAVEMENT REHABILITATION, MILEPOST 117.83 TO 123.65  
 ITEM NO. 9-2023.00  
 GENERAL SUMMARY**

ITEM NUMBER	ITEM	UNIT	QUANTITY
2775	ARROW PANEL	EACH	2
2671	PORTABLE CHANGEABLE MESSAGE SIGN	EACH	8
2677	ASPHALT PAVEMENT MILLING & TEXTURING ③	TON	27,938
2676	MOBILIZATION FOR MILLING & TEXTURING	L.S.	1
8100	CONCRETE-CLASS A ④	C.Y.	24.77
71	CRUSHED AGGREGATE SIZE NO. 57 ④	TON	53
8150	STEEL REINFORCEMENT ④	LB	392
2929	CRASH CUSHION TYPE IX ⑤	EACH	2
24191ER	DURABLE WATERBOURNE MARKING - 12" W	L.F.	5,135
24189ER	DURABLE WATERBOURNE MARKING - 6" W	L.F.	85,094
24190ER	DURABLE WATERBOURNE MARKING - 6" Y	L.F.	69,777
6567	PAVE MARKING - THERMO STOP BAR - 12 IN	L.F.	120
6511	PAVEMENT STRIPING TEMPORARY PAINT - 6"	L.F.	5,000
2268	REMOVE & REPLACE FENCE (WOVEN WIRE TYPE 1)	L.F.	65,700
1825	ISLAND CURB AND GUTTER	L.F.	10
----	SPECIAL CONCRETE HEADER CURB	L.F.	3,150
1691	FLUME INLET TYPE 2	EACH	6
2696	SHOULDER RUMBLE STRIPS - SAWED ③	LIN. FT.	141,438
2007IEC	JOINT ADHESIVE	L.F.	61,460
22664EN	WATER BLASTING EXISTING STRIPE	L.F.	5,000
3171	CONCRETE BARRIER WALL TYPE 9T	L.F.	1,400
2003	RELOCATE TEMPORARY CONCRETE BARRIER	L.F.	1,400
8903	CRASH CUSHION TYPE VI CLASS BT TL3	EACH	2
2898	RELOCATE CRASH CUSHION	EACH	2
04793	CONDUIT 1-1/4 INCH	LIN. FT.	50
04795	CONDUIT 2 INCH	LIN. FT.	20
04820	TRENCHING AND BACKFILLING	LIN. FT.	60
04829	PIEZOELECTRIC SENSOR	EACH	4
04830	LOOP WIRE	LIN. FT.	1,500
04895	LOOP SAW SLOT AND FILL	LIN. FT.	365
20359NN	GALV. STEEL CABINET	EACH	2

- ① TO BE USED, BUT NOT LIMITED TO: SLIDE REPAIR, PIPE EROSION, WASHOUT REPAIR BEHIND GUARDRAIL, PERF. PIPE HDWL'S, AND OTHER LOCATIONS AS DIRECTED BY THE ENGINEER.
- ② INCLUDES 200 S.Y. TO BE USED AS DIRECTED BY THE ENGINEER.
- ③ CARRIED OVER FROM PAVING SUMMARY
- ④ FOR CRASH CUSHION AT MEDIAN PIERS
- ⑤ TO INCLUDE EARTHWORK FOR CORRECTING MEDIAN
- ⑥ INCLUDES 23.9 TONS OF ITEM 100 AND 2.87 OF ITEM 103 FROM FORESLOPE REPAIR DETAIL

COUNTY OF BATH  
ITEM NO. 9-2023.00  
SHEET



~ PICTORIAL VIEW ~



~ CONCRETE PAD SECTION ~  
WHEN REQUIRED  
(PAD 4'-0" WIDE x SEE CHART FOR LENGTH)

~ ELEVATION ~

~NOTES~

1. CRASH CUSHION TYPE VI, CLASS B, ☆, △
- ☆ EITHER TEST LEVEL 2 (TL2) OR TEST LEVEL 3 (TL3), AS REQUIRED.
- △ SEE "CONNECTION DETAILS OF CRASH CUSHION TYPE VI TO DOUBLE FACE GUARDRAIL".
2. CRASH CUSHION TYPE VI-BT OR CT IS DEPICTED ATTACHED TO A CONCRETE BARRIER (TEMPORARY).
3. WHEN CRASH CUSHION TYPE VI-BT OR CT IS ATTACHED TO STEEL "W" BEAM GUARDRAIL (DOUBLE FACE), ALL APPLICABLE DETAILS SHOWN ON CUR. STD. DWG. RBC-110. "CONNECTION DETAIL OF CRASH CUSHION TYPE VI TO DOUBLE FACE GUARDRAIL" SHALL BE REQUIRED.
4. WHEN CRASH CUSHION TYPE VI-BT OR CT IS ATTACHED TO STEEL "W" BEAM GUARDRAIL (DOUBLE FACE), THE TRANSITION PANEL SHALL BE ELIMINATED.
5. IN A TWO-WAY TRAFFIC SITUATION FOR A 6" OR 9" TOP WIDTH WALL THE UNIT SHALL BE OFFSET FROM THE CENTERLINE OF THE WALL AS SHOWN IN THE PLAN VIEW. FOR A 12" TOP WIDTH WALL, THE UNIT SHALL BE CENTERED ON THE END OF THE BARRIER.
6. FOR ONE-WAY APPROACH TRAFFIC THE UNIT SHALL BE CENTERED ON THE END OF THE BARRIER.
7. THE COMPLETE INSTALLATION SHALL MEET ALL APPLICABLE REQUIREMENTS OF ENERGY ABSORPTIONS INC. OR TRINITY INDUSTRIES INC.
8. ANCHORAGE DEVICES TO SECURE CRASH CUSHION TO THE EXISTING SURFACE SHALL BE SHOWN ON APPROVED SHOP DRAWINGS.
9. WHEN REQUIRED, THE CONCRETE PAD, PAD EXCAVATION AND STEEL REINFORCEMENT, INSTALLED IN PLACE SHALL BE INCLUDED IN THE UNIT PRICE BID FOR CRASH CUSHION TYPE VI. USE CLASS AA CONCRETE TO CONSTRUCT CONCRETE PAD (SEE CONCRETE PAD SECTION FOR STEEL REQUIREMENTS). THE PAD SHALL BE CURED AND FINISHED AS EITHER SIDEWALK OR PAVEMENT. THE CROSS SLOPE OF THE PAD OR PAVEMENT SHALL NOT EXCEED 5%. THE PAD WILL NOT BE REQUIRED WHEN UNIT IS CONSTRUCTED ON RIGID PAVEMENT.
10. THE PAD WILL NOT BE REQUIRED WHEN THE UNIT IS CONSTRUCTED ON EXISTING PAVEMENT OR BRIDGES AND THE COST OF ANCHORING SHALL BE INCLUDED IN THE UNIT PRICE OF THE CRASH CUSHION.
11. USE WITH CURRENT STANDARD DRAWING RBC-110 WHEN CONNECTING TO DOUBLE FACE GUARDRAIL.
12. PERMISSIBLE ALTERNATES FOR CRASH CUSHION TYPE VI-BT OR CT ARE PATENTED (ONE SOURCE) ITEMS: ENERGY ABSORPTION SYSTEMS, INC. OF CHICAGO, IL., TRINITY INDUSTRIES, INC. OF DALLAS, TX, OR SCI. PRODUCTS, INC. OF ST. CHARLES, IL.
13. THE MANUFACTURER SHALL FURNISH TWO (2) SETS OF SHOP DRAWINGS TO THE CONTRACTOR WITH EACH INSTALLATION.

CLASS	SPEED (MPH)	ATTENUATOR PRODUCT NAME		APPROX. CU. YD. CONC. FOR PAD	
		MODEL	LENGTH		
B	45 & LESS	TL2	14'-0"	1.12	
			3-BAY QUADGUARD	12'-0"	0.87
	OVER 45	TL3	21'-0"	1.63	
			6-BAY QUADGUARD	21'-0"	1.53

A CLASS CT CAN BE USED AT THE CONTRACTOR'S DISCRETION.

~ LEGEND ~

- ① NOSE ASSEMBLY
- ② CONSTRUCTION ZONE BACKUP
- ③ OBJECT MARKER TYPE I, (SEE CUR. MUTCD MANUAL FOR DETAILS) CENTER HORIZ. AND VERT.

USE WITH CUR. STD. DWG. RBE-060 (SEE NOTE II, FOR ACCOMPANYING DRAWINGS).

KENTUCKY  
DEPARTMENT OF HIGHWAYS

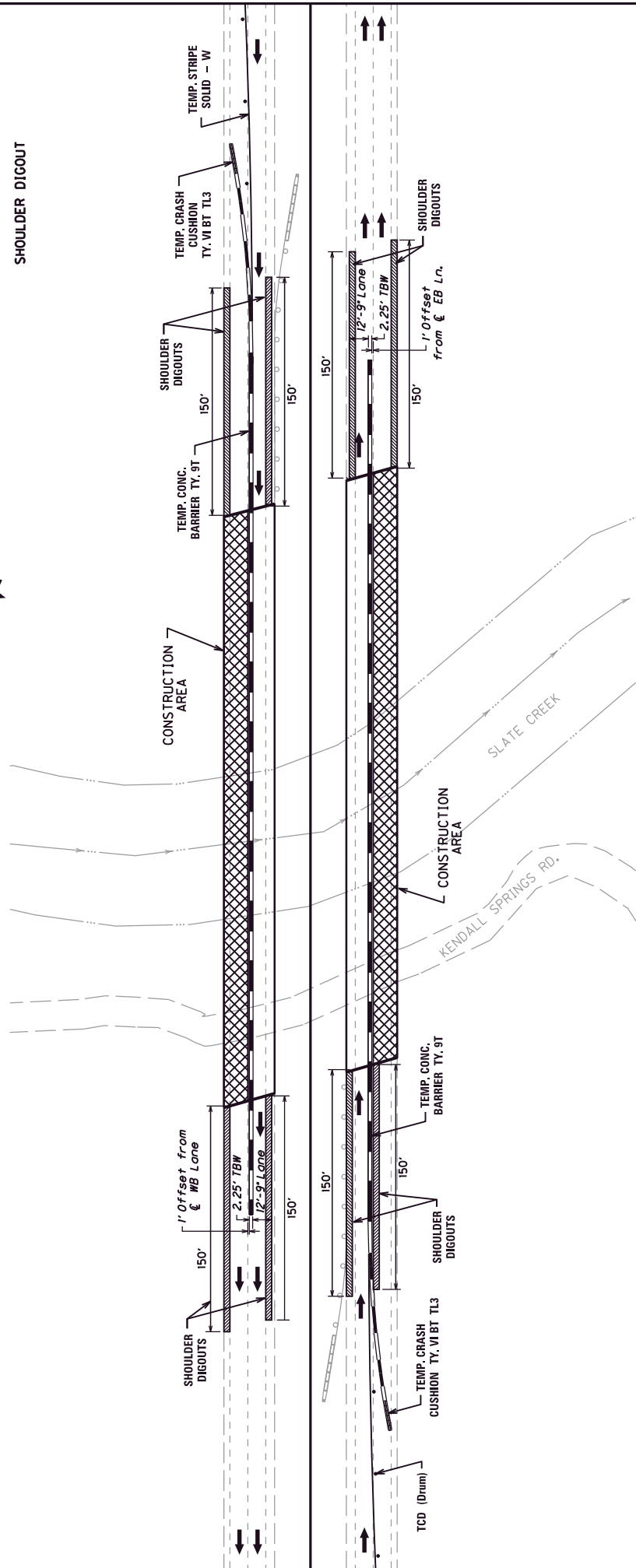
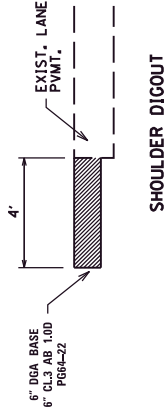
CRASH CUSHION  
TYPE VI-BT

Added: 8-24-2012  
Contract ID: 117-124  
Page 43 of 48  
SUBMITTED: 8-24-2012  
DESIGNER: [Signature]  
DIRECTOR: DIVISION OF HIGHWAY DESIGN

COUNTY OF	BATH
ITEM NO.	9-2023.08

**PHASE I**

1. INSTALL TEMPORARY LANE CLOSURE (Incidental to M.O.T.).
2. CONSTRUCT INSIDE SHOULDER DIGOUT AND PAVEMENT REPLACEMENT.
3. INSTALL LANE CLOSURE (REFER TO STANDARD DRAWING TTC-115-02).
4. INSTALL TEMPORARY CONCRETE BARRIER AND CRASH CUSHION.
5. CONSTRUCT OVERLAY ON OUTSIDE LANES.
6. CONSTRUCT OUTSIDE SHOULDER DIGOUT AND PAVEMENT REPLACEMENT.



SCALE : 1" = 100'

MAINTENANCE OF TRAFFIC  
 I-64 MP 120 OVER  
 SLATE CREEK PHASE

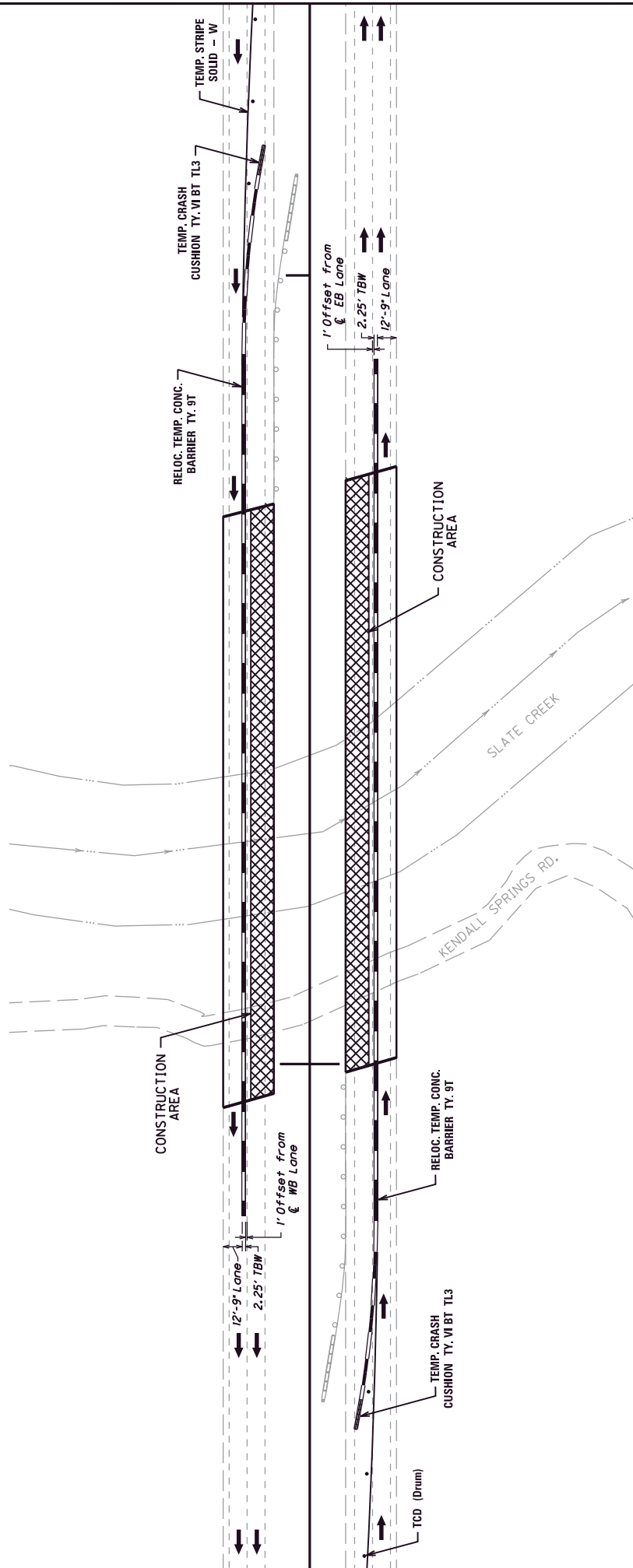
COUNTY OF	BATH
ITEM NO.	9-2023.08

MAINTENANCE OF TRAFFIC  
 I-64 MP 120 OVER  
 SLATE CREEK PHASE II

SCALE : 1" = 100'

**PHASE II**

1. INSTALL LANE CLOSURE (SEE STANDARD DRAWING TTC-115-02).
2. RELOCATE TEMPORARY CONCRETE BARRIER AND CRASH CUSHION.
3. CONSTRUCT OVERLAY ON INSIDE LANES.



**PROPOSAL BID ITEMS**

Report Date 10/17/12

**SECTION: 1 - ROADWAY**

LINE	BID CODE	ALT	DESCRIPTION	QUANTITY	UNIT	UNIT PRICE	EXTENDED PRICE
0010	00001		DGA BASE	3,822.00	TON		
0020	00071		CRUSHED AGGREGATE SIZE NO 57	53.00	TON		
0030	00078		CRUSHED AGGREGATE SIZE NO 2	11,615.00	TON		
0040	00100		ASPHALT SEAL AGGREGATE	743.00	TON		
0050	00103		ASPHALT SEAL COAT	210.00	TON		
0060	00217		CL4 ASPH BASE 1.00D PG64-22	424.00	TON		
0070	00342		CL4 ASPH SURF 0.38A PG76-22	28,015.00	TON		
0080	01028		PERF PIPE HEADWALL TY 3-4 IN	5.00	EACH		
0090	01490		DROP BOX INLET TYPE 1	1.00	EACH		
0100	01691		FLUME INLET TYPE 2	6.00	EACH		
0110	01825		ISLAND CURB AND GUTTER	10.00	LF		
0120	01877		SPECIAL HEADER CURB	3,150.00	LF		
0130	01982		DELINEATOR FOR GUARDRAIL MONO DIRECTIONAL WHITE	400.00	EACH		
0140	01983		DELINEATOR FOR GUARDRAIL MONO DIRECTIONAL YELLOW	50.00	EACH		
0150	01984		DELINEATOR FOR BARRIER - WHITE	40.00	EACH		
0160	02003		RELOCATE TEMP CONC BARRIER	1,400.00	LF		
0170	02165		REMOVE PAVED DITCH	236.00	SQYD		
0180	02200		ROADWAY EXCAVATION	3,936.00	CUYD		
0190	02268		REMOVE & REPLACE FENCE	65,700.00	LF		
0200	02347		WATER GATE TYPE 1	3.00	EACH		
0210	02352		GUARDRAIL-STEEL W BEAM-D FACE	237.50	LF		
0220	02363		GUARDRAIL CONNECTOR TO BRIDGE END TY A	1.00	EACH		
0230	02365		CRASH CUSHION TYPE IX-A	2.00	EACH		
0240	02369		GUARDRAIL END TREATMENT TYPE 2A	4.00	EACH		
0250	02381		REMOVE GUARDRAIL	4,805.00	LF		
0260	02391		GUARDRAIL END TREATMENT TYPE 4A	6.00	EACH		
0270	02483		CHANNEL LINING CLASS II	3,452.00	TON		
0280	02484		CHANNEL LINING CLASS III	900.00	TON		
0290	02562		SIGNS	744.00	SQFT		
0300	02575		DITCHING AND SHOULDERING	30,730.00	LF		
0310	02599		FABRIC-GEOTEXTILE TYPE IV	1,346.00	SQYD		
0320	02650		MAINTAIN & CONTROL TRAFFIC	1.00	LS		
0330	02671		PORTABLE CHANGEABLE MESSAGE SIGN	8.00	EACH		
0340	02676		MOBILIZATION FOR MILL & TEXT	1.00	LS		

**PROPOSAL BID ITEMS**

Report Date 10/17/12

**SECTION: 1 - ROADWAY**

LINE	BID CODE	ALT	DESCRIPTION	QUANTITY	UNIT	UNIT PRICE	EXTENDED PRICE
0350	02677		ASPHALT PAVE MILLING & TEXTURING	27,938.00	TON		
0360	02696		SHOULDER RUMBLE STRIPS-SAWED	141,438.00	LF		
0370	02775		ARROW PANEL	2.00	EACH		
0380	02898		RELOCATE CRASH CUSHION	2.00	EACH		
0390	02929		CRASH CUSHION TYPE IX	2.00	EACH		
0400	03171		CONCRETE BARRIER WALL TYPE 9T	1,400.00	LF		
0410	03240		BASE FAILURE REPAIR	1,001.00	SQYD		
0420	03383		PVC PIPE-4 IN	30.00	LF		
0430	04793		CONDUIT-1 1/4 IN	50.00	LF		
0440	04795		CONDUIT-2 IN	20.00	LF		
0450	04820		TRENCHING AND BACKFILLING	60.00	LF		
0460	04829		PIEZOELECTRIC SENSOR	4.00	EACH		
0470	04830		LOOP WIRE	1,500.00	LF		
0480	04895		LOOP SAW SLOT AND FILL	365.00	LF		
0490	05950		EROSION CONTROL BLANKET	15,000.00	SQYD		
0500	06412		STEEL POST MILE MARKERS	12.00	EACH		
0510	06417		FLEXIBLE DELINEATOR POST-W	317.00	EACH		
0520	06418		FLEXIBLE DELINEATOR POST-Y	83.00	EACH		
0530	06511		PAVE STRIPING-TEMP PAINT-6 IN	5,000.00	LF		
0540	06567		PAVE MARKING-THERMO STOP BAR-12IN	120.00	LF		
0550	06592		PAVEMENT MARKER TYPE V-B W/R	247.00	EACH		
0560	06593		PAVEMENT MARKER TYPE V-B Y/R	207.00	EACH		
0570	08100		CONCRETE-CLASS A	24.77	CUYD		
0580	08150		STEEL REINFORCEMENT	392.00	LB		
0590	08510		REM EPOXY BIT FOREIGN OVERLAY	2,431.00	SQYD		
0600	08526		CONC CLASS M FULL DEPTH PATCH	12.00	CUYD		
0610	08534		CONCRETE OVERLAY-LATEX	101.30	CUYD		
0620	08549		BLAST CLEANING	2,467.00	SQYD		
0630	10020NS		FUEL ADJUSTMENT	37,560.00	DOLL	\$1.00	\$37,560.00
0640	10030NS		ASPHALT ADJUSTMENT	66,189.00	DOLL	\$1.00	\$66,189.00
0650	20071EC		JOINT ADHESIVE	61,460.00	LF		
0660	20359NN		GALVANIZED STEEL CABINET	2.00	EACH		
0670	20360ES818		WOOD POST	4.00	EACH		
0680	20391NS835		ELECTRICAL JUNCTION BOX TYPE A	2.00	EACH		
0690	21802EN		G/R STEEL W BEAM-S FACE (7 FT POST)	6,225.00	LF		
0700	22664EN		WATER BLASTING EXISTING STRIPE	5,000.00	LF		



## PROPOSAL BID ITEMS

Report Date 10/17/12

### SECTION: 1 - ROADWAY

LINE	BID CODE	ALT	DESCRIPTION	QUANTITY	UNIT	UNIT PRICE	EXTENDED PRICE
0710	23143ED		KPDES PERMIT AND TEMP EROSION CONTROL	1.00	LS		
0720	08903		CRASH CUSHION TY VI CLASS BT TL3 (REVISED: 10-17-12)	2.00	EACH		
0730	24094EC		PARTIAL DEPTH PATCHING	22.00	CUYD		
0740	24189ER		DURABLE WATERBORNE MARKING-6 IN W	85,094.00	LF		
0750	24190ER		DURABLE WATERBORNE MARKING-6 IN Y	69,777.00	LF		
0760	24191ER		DURABLE WATERBORNE MARKING-12 IN W	5,135.00	LF		
0770	24381EC		G/R STEEL W BEAM-S FACE (NESTED)	80.00	LF		
0780	24489EC		INLAID PAVEMENT MARKER	1,522.00	EACH		

### SECTION: 2 - DEMOBILIZATION

LINE	BID CODE	ALT	DESCRIPTION	QUANTITY	UNIT	UNIT PRICE	EXTENDED PRICE
0790	02568		MOBILIZATION	1.00	LS		
0800	02569		DEMOBILIZATION	1.00	LS		